

TestShell Controller

Multiple Test Stations Manager, Executor & Optimizer

TestShell Controller optimizes test duration by controlling and managing multiple stations. It schedules and controls test execution among stations, maximizes station utilization and collects all data to the TestShell central server.

Benefits

Virtual station attributes, IP
allocation, test, time

Control across

Automated test execution monitoring and instant failure notification

Virtual station locking by user-defined attributes (type, bandwidth, priority, location etc)

Smart test re-allocation, holding and termination according to station availability and test priority

Boost Test Execution Efficiency

- Parallel test execution
- Real-time execution viewing and monitoring
- Automatic alerts of test execution issues (e.g. via text message or email)

Maximize test data analysis

- Automatic real-time aggregation of test data across multiple stations
- Automatic synchronization and storage of test data for full customizable reporting and analysis

How it Works

TestShell Controller's advanced test planning, scheduling, execution and reporting capabilities fully optimize test management

Test Planning

• Test Scheduling:

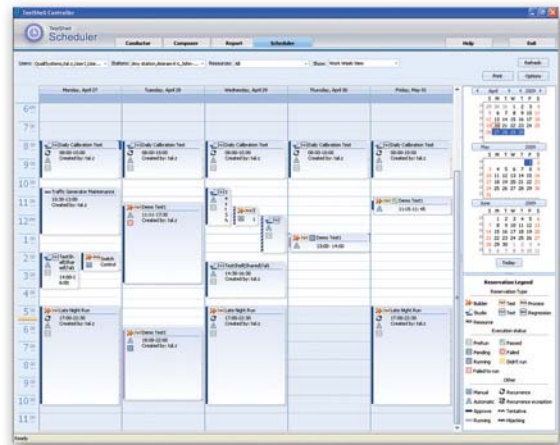
The user-friendly "Calendar-like" GUI operates as an execution-planning tool for easy test station allocation, test priority setting and automatic test assignment. Scheduler includes a filterable list of all stations via attributes including test allocation time and status, online/offline status and included/excluded status.



Automatically run tests on multiple stations 24/7

• Defining Test Plans

Test Plans are combinations of tests that run together. TestShell Controller can configure Test Plan execution on one or more stations, including DLL or EXE file integration.



Easy test scheduling via a "calendar-like" interface

Test Execution and Monitoring

TestShell Controller displays a real-time log of test execution status, including an individual station log and a complete event log. In the event of test or station failure, instant automated alerts are sent via text message or email, and several solutions can be utilized to automatically fix the failure (like restarting a test or redirecting it to another station).

Test Reporting

TestShell Controller offers a wealth of customizable reports, including test reports, execution summary reports and event-based reports, facilitating comprehensive and powerful test data analysis.

Further optimize test management with TestShell Resource Manager Module!

To learn more go to: www.qualisystems.com

TestShell

TestShell is an end-to-end test automation solution compatible for testing virtually any hardware, device or embedded system. While providing code free **test authoring**, automatic **test execution**, advanced **test management** and comprehensive **test reporting and analysis**, TestShell helps equipment manufacturers and service providers to improve product quality, shorten time to market and significantly reduce capital and operational expenditures.