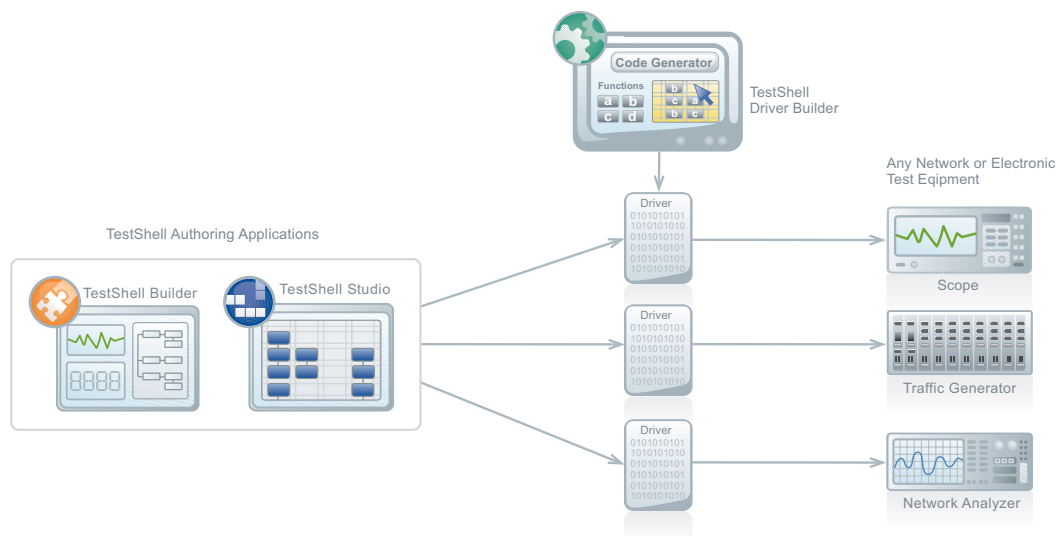




TestShell Driver Builder

Code-free hardware interface editor

TestShell Driver Builder is a code-free **hardware interface editor** for quick development of drivers. The application uses an intuitive, flowchart-like GUI to help test engineers independently and easily build drivers or entire driver collection (libraries) that seamlessly interface with most brands and types of electronic test equipment (such as Scopes, Power Supplies, Multi Meters and others) or network test equipment (such as Traffic Generators, Layer 1 Switches and more). With Driver-BUILDER the numerous scripts and resources that are commonly required for equipment interfacing, are now replaced with a unified DLL file that is easily created and deployed.



- ➔ Fast and simple driver creation for any development environment
- ➔ User friendly GUI that requires no programming skills
- ➔ Designed to support full equipment interchangeability
- ➔ Built in collections of drivers
- ➔ High speed performance and implementation
- ➔ Optional source control integration

Highlights

Features and Benefits

Independently create and implement any driver in-house

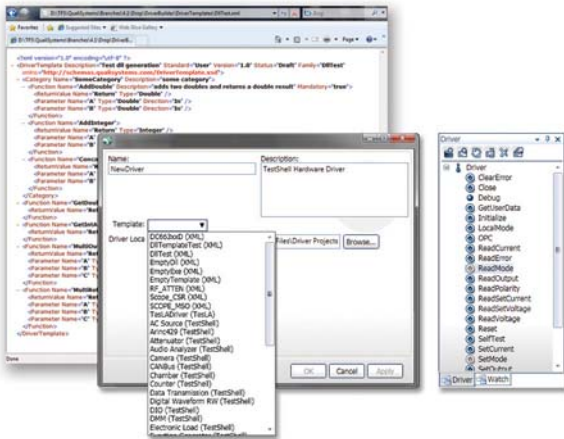
- Intuitive drag-and-drop graphical interface
- No programming skills required, eliminating dependence on outsourcing
- Seamless deployment of a unified DLL file, replacing multiple scripts and resources such as multiple TCL files
- A simple XML-based configuration is used to easily define driver libraries

Interface with virtually any T&M instrument and protocol

- Create drivers or complete driver families for any development environment
- Overcome any technological complexity to create the required driver
- Out-of-the-box support for multiple families of drivers

Increase flexibility and knowledge-sharing

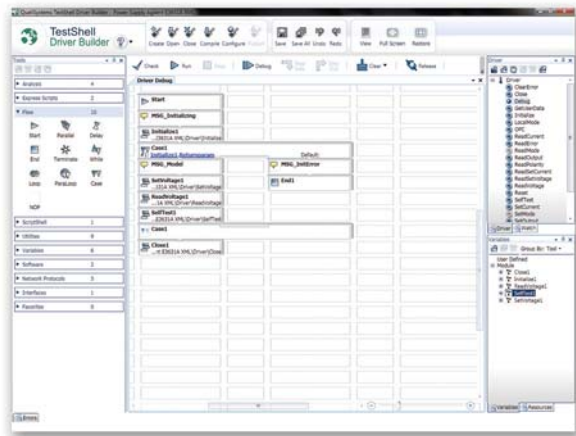
- Optional source control integration for easy version control and regression management
- Function modification and expansion capabilities eliminate compatibility challenges, enabling full equipment interchangeability
- Automatic documentation of all functions and variables allows easy collaboration



XML Configuration → Choosing a Driver Template
→ Implementing Functions

Ensure high-quality, future-proof drivers

- Empowers Test Engineers to create drivers in-house, maximizing equipment knowledge expertise
- Wizard-driven driver creation allows coherent development and enables easy future tracking and control
- Comprehensive debugging canvas guarantees high driver performance



Easy drag-and-drop driver creation

How it Works

Test engineers can quickly and easily create any driver by selecting and adding the required functions on TestShell Driver Builder user friendly drag-and-drop interface.

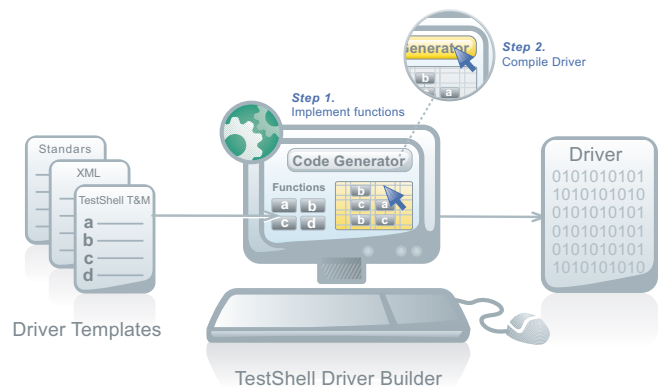
Several types of built-in driver templates are available, supporting a logical driver development methodology and easy requirements tracking:

1. TestShell Test and Measurement (T&M) equipment templates represent the various T&M virtual panels in the TestShell Test Authoring Applications
2. XML-based templates
3. International Standards templates

When a template is chosen, Driver Builder opens a list of functions required by the driver.

These functions can easily be implemented directly on the Driver Builder canvas.

After all required functions are applied, a simple click on the Code Generator button compiles the driver.



TestShell

TestShell is an end-to-end test automation solution compatible for testing virtually any hardware, device or embedded system. While providing code free **test authoring**, automatic **test execution**, advanced **test management** and comprehensive **test reporting and analysis**, TestShell helps equipment manufacturers and service providers to improve product quality, shorten time to market and significantly reduce capital and operational expenditures.