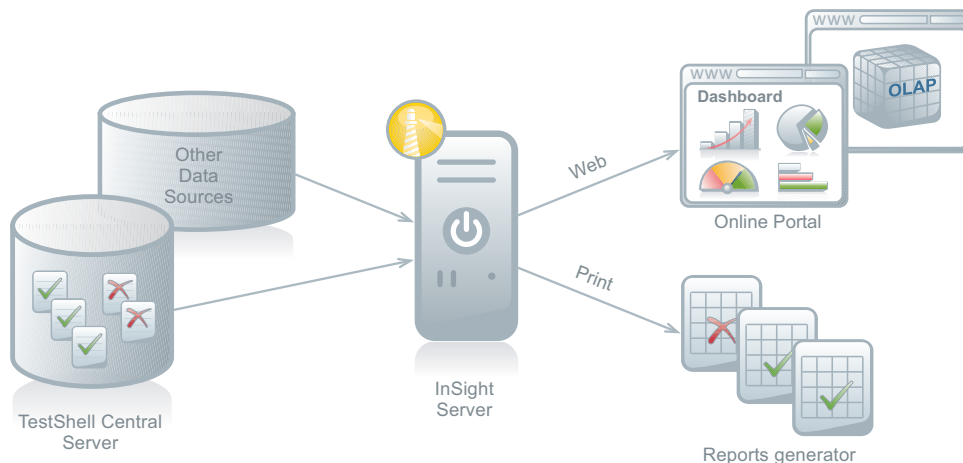


TestShell InSight

Business Intelligence, Reporting and Data & Trend Analysis

TestShell InSight improves executive decision-making by displaying test results and trends in real-time, thereby transforming test information into a powerful decision-support tool. InSight is an optional TestShell module for the TestShell Team and Enterprise Editions.



- Web-based application accessible at any time from any location
- Powerful Query Builder allowing users to mine any information from database
- Built-in Customisable Report Generator Wizard
- Real-time dashboard display of test data from virtually any data source
- Display of both OLAP-based and query-generated information
- Real-time Events and Actions Engine

Highlights

Features and Benefits

Leverage virtually any data source

- Full compatibility with almost any data source including TestShell central server, Oracle, MS SQL, Access, Excel and more
- Built-in and customisable Report Generator Wizard enabling creation of report templates tailored to any user's specific requirements
- Powerful Query Builder allowing creation of any query via a user-friendly interface that automatically generates SQL scripts



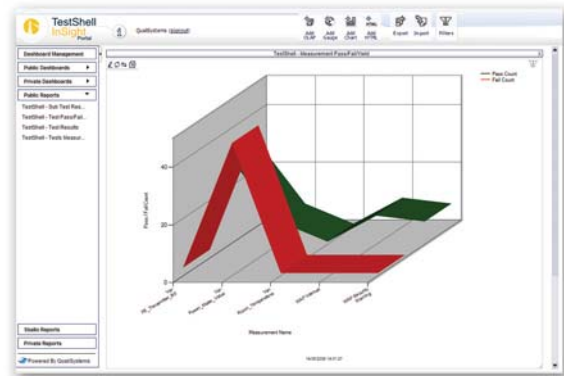
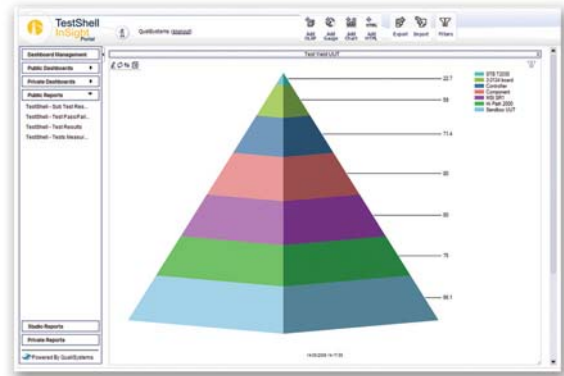
TestShell InSight dashboard - Real-time display of test data from any data source

Analyze all test data via comprehensive dashboards

- Drag-and-drop interface enabling easily modified, individually tailored dashboards
- Wide variety of display objects including charts, gauges, OLAP (online analytical processing) elements, HTML and more
- Support of statistical process control (SPC) functions
- Real-time events and action updates allowing receipt of alert notifications in various formats (e.g. on-screen, email, text messages)
- Flexible authorization definitions allowing creation of "public", "shared" and "private" elements, reports or dashboards

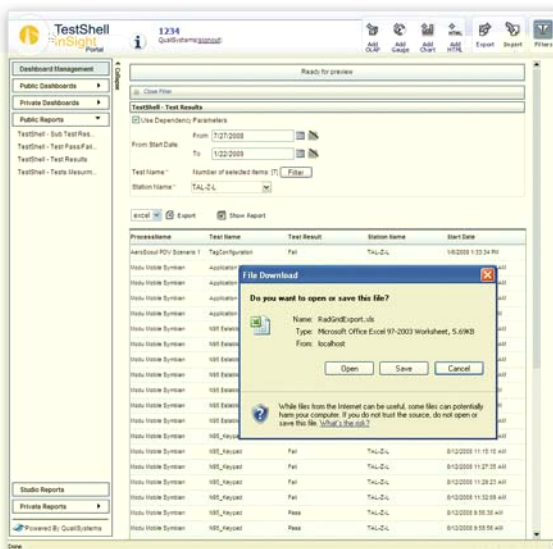
Turn testing information into a powerful decision support tool

- Easy and convenient access to test results from almost any local or remote location enabling improved and faster decision making
- Internet Information Services (IIS) server using the TestShell central server allowing publication and display of test data through a web browser
- Aggregated test results analysis via a user-friendly interface
- Simple exporting of reports to various formats (e.g. XML, Excel, PDF, etc.)



TestShell InSight - a wide variety of online display objects

You can leverage your test equipment usage analysis with TestShell Resource Manager Module!
To learn more go to: www.qualisystems.com



TestShell InSight Report, simply exported to Excel format

TestShell

TestShell is an end-to-end test automation solution compatible for testing virtually any hardware, device or embedded system. While providing code free **test authoring**, automatic **test execution**, advanced **test management** and comprehensive **test reporting and analysis**, TestShell helps equipment manufacturers and service providers to improve product quality, shorten time to market and significantly reduce capital and operational expenditures.