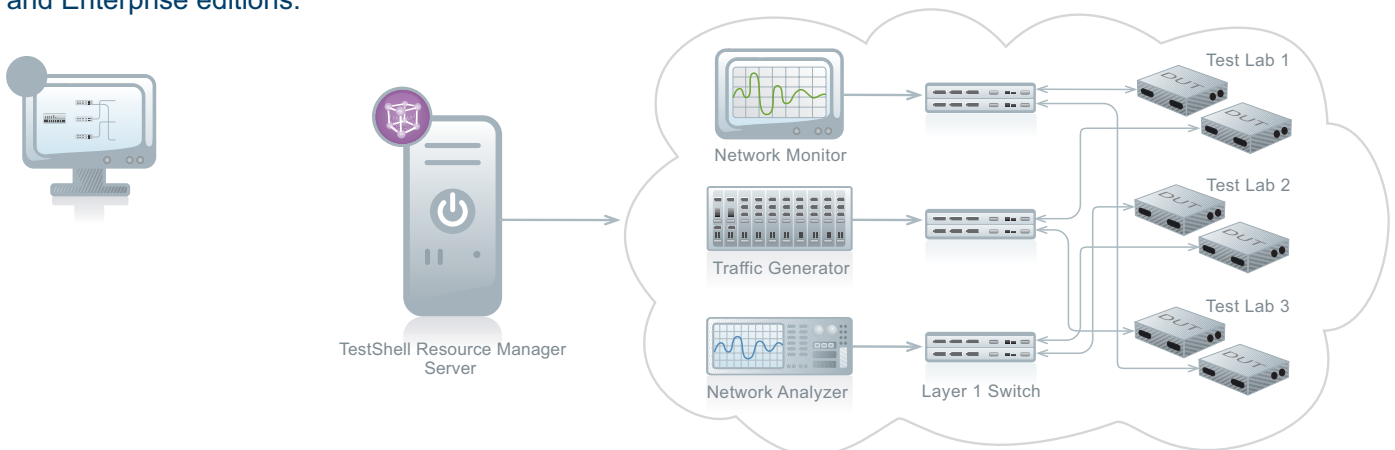


TestShell Resource Manager

TestShell Resource Manager optimizes lab resource utilization by allowing multiple users to load, create, lock and reserve diverse multi-vendor resources. With embedded layer1 switch control, Resource Manager automatically reserves complete topologies for test execution and wraps multiple switches into a controlled cloud. With lab resource management and utilization, and with automatic configuration of complex topologies, TestShell Resource Manager significantly accelerates testing team performance.

TestShell Resource Manager is a server-client solution, available as an optional module for the TestShell Team and Enterprise editions.

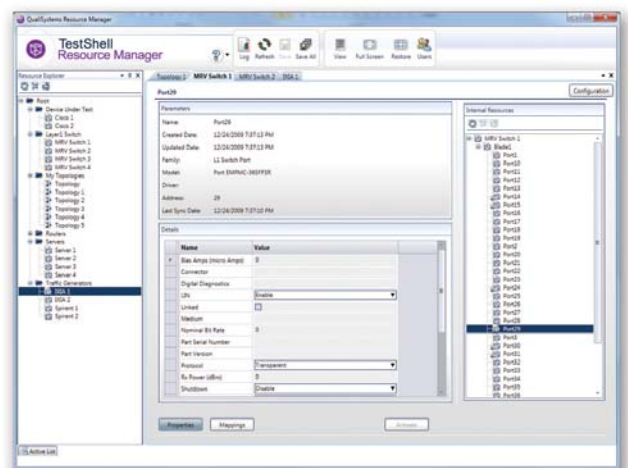


- Vendor agnostic resource and station definition and utilization
- Reservation of resources by multiple users and/or test automation engines
- Automated lab setup with built-in layer 1 switch control
- Multiple layer 1 switch management with automated path calculation, reservation & setup
- Easy activation of complex lab topologies
- Seamless integration with the complete TestShell Test Automation Suite

Highlights

Easy lab resource definition and management

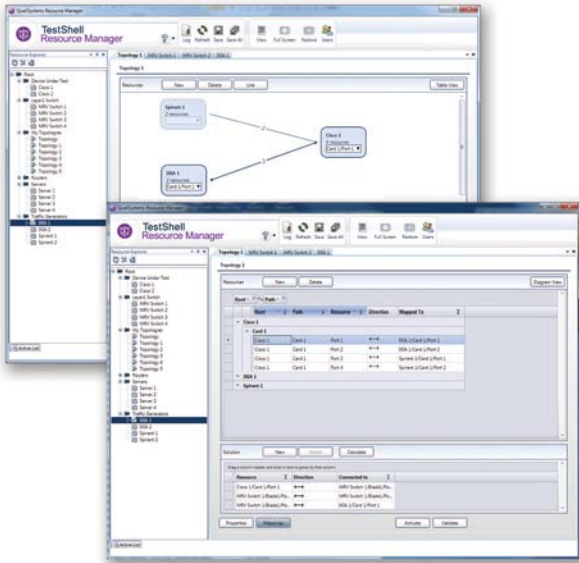
- Add all required resources including customized resources (Layer1 Switches, Traffic Generators, Routers and more)
- Define the complete resources structure and models (Cards, Blades, Ports, Slots and more)
- Attach descriptive and logical attributes to each resource (Protocols, location, address, session info and more)
- Define the entire lab's physical connections and cabling in a single one time effort



Easily define your lab resources

Reduce lab setup time & effort

- Create multiple topology documents activated with a single click
- Automatically calculate the required path and configuration of layer 1 switches
- Control multiple switches and optimize their paths
- Guarantee resource locking under a required topology



Simply configure a test topology

Reduce test error and corruption

- Prevent external operations from changing resources and corrupting tests
- Verify resource availability prior to execution
- Automatically inherit all resource parameters directly to the test by resource selection

Multiple Switch & Cloud Management

- Easily group a set of switches into one cloud
- Automatically calculate, reserve, lock and configure all required paths through the cloud

Powerful framework scalability

- Automatically save and manage resources via a central database
- Utilize strong client - server based architecture
- Easily scale to large environments with thousands of ports and multiple resources

Resource utilization

- Guarantee resource availability for the entire testing cycle
- Schedule and coordinate resource reservations between test executions, test development and other resource customers
- Publish resource availability across the testing team
- Track utilization records to maximize resource usage

Test execution optimization

- Built-in integration with the TestShell Automation Suite
- Plan and schedule test execution and design procedures via a “calendar-like” GUI
- Automatic resource reservation and locking for automated tests
- Additional API for third-party integration
- Optimized switch utilization via shortest path

You can further optimize your test management with TestShell Controller Module!
To learn more go to: www.qualisystems.com



TestShell

TestShell is an end-to-end test automation solution compatible for testing virtually any hardware, device or embedded system. While providing code free automatic

advanced and comprehensive , TestShell helps equipment manufacturers and service providers to improve product quality, shorten time to market and significantly reduce capital and operational expenditures.