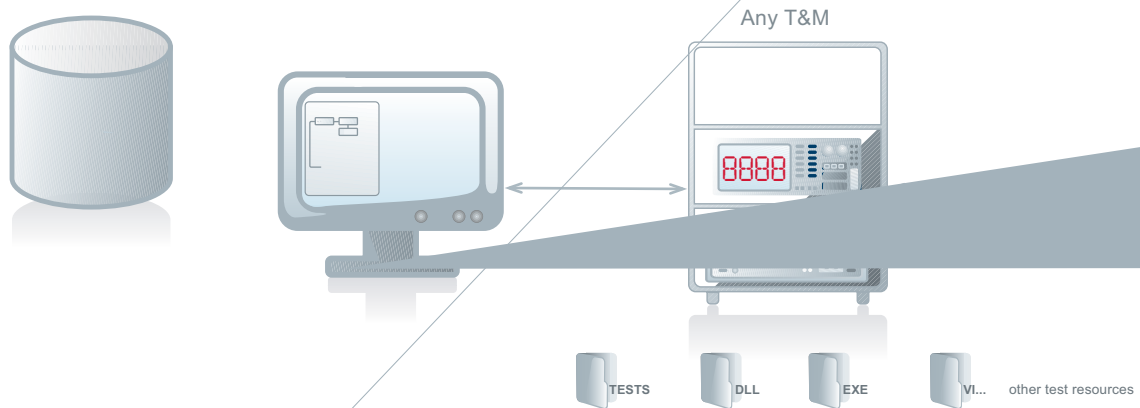


TestShell Runner

A Family of Fast, Fully-Automated Test Executors

The TestShell Runner family of breakthrough test executors provides fast, fully automated and continuous testing of any device or system. TestShell Runner's equipment-independent test execution saves time and costs, facilitates trouble-free production and outsources operations. By automatically loading and saving tests and results to a central server, TestShell Runner ensures maximum test productivity without any data loss. The Runner Family applications are TestShell clients, available in the TestShell Team and Enterprise editions.



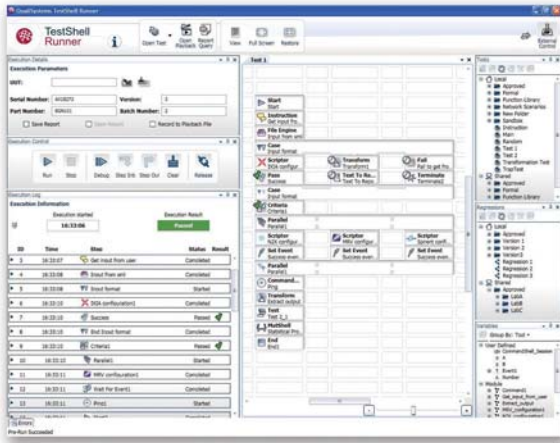
- Full automation at the touch of a button
- Real-time viewing of results and raw data during test execution
- Built-in support of regression-level testing
- Automatic customized-report generation
- Standardized collection of all results from different stations, local & networked
- Flawless execution of the same test utilizing different T&M equipment
- Optional self-designed simple GUI using built in API

Highlights

Features and Benefits

Automated end-to-end test solution

- Automatic initiation of all equipment and software resources necessary to test the device or system
- Automated capabilities to define local station adaptation to specific test requirements
- Local or remote test execution initiation and regression via external API
- Easy integration of additional external inputs (e.g. user instructions) for semi-automated and manual actions
- Automatic collection, manipulation and analysis of all test results
- Seamless importing of configurations and specs from external files



TestShell Runner - Fully automated

Full data aggregation and reporting

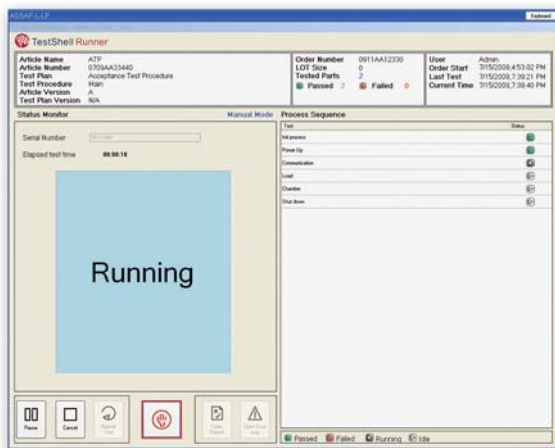
- Central data collection eliminating unnecessary manual data aggregation or collection
- Automatic analysis and collection of all results to the TestShell central server
- Fully automated reporting and result sharing
- Customizable report templates



TestShell Runner Automatic Report

Execute procedures on various platform types

- Operating System (OS) support includes Windows, Linux, UNIX and many Mobile and other OSs
- Various TestShell Runner versions supporting light and heavy load execution according to user scenario and requirements
- Fully customizable UI can be simple or complex, matching the operator's skills, knowledge and requirements (e.g. for production environments)



TestShell Runner Customizable GUI

Leverage built-in API for quick integration

- Already integrated with HP Quality Center, IBM Doors and IBM Rational ClearQuest
- Executable via the TestShell Controller Server
- External API allows test initiation, status view and results collection

You can optimize your test execution process with TestShell Controller, Scheduler and Resource Manager Modules!

To learn more go to: www.qualisystems.com

TestShell

TestShell is an end-to-end test automation solution compatible for testing virtually any hardware, device or embedded system. While providing code free **test authoring**, automatic **test execution**, advanced **test management** and comprehensive **test reporting and analysis**, TestShell helps equipment manufacturers and service providers to improve product quality, shorten time to market and significantly reduce capital and operational expenditures.