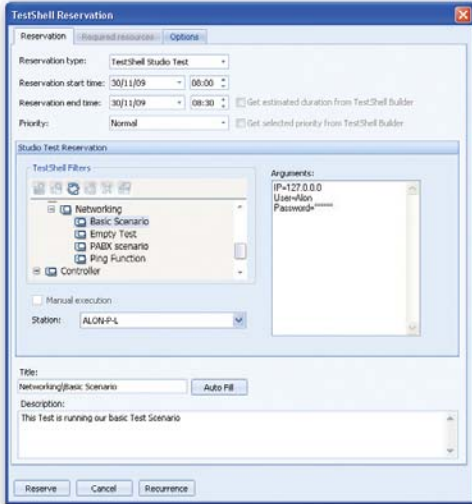




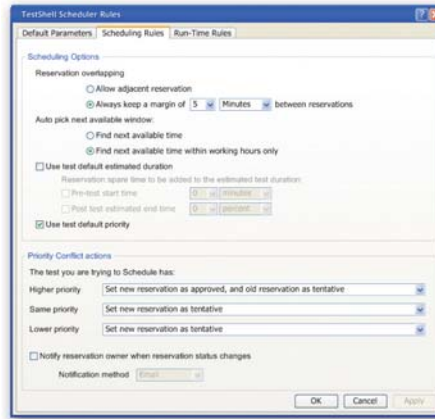
## Maximize test station utilization

Schedule tests across single or multiple stations from a central repository for optimized test station utilization and increased execution process efficiency.

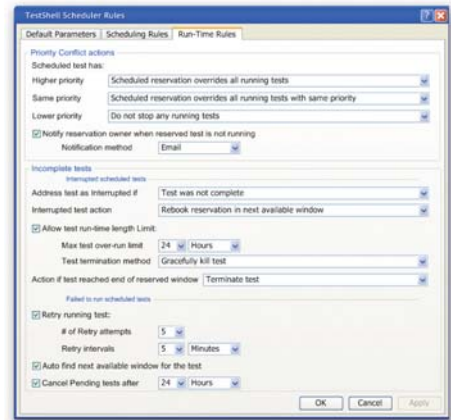
- All stations are organized on a filterable list
- Automatic allocation of tests to available relevant stations
- Automatic allocation of tests to available time slots



Test and station reservation



Defining Scheduling rules



Setting run time rules

## Define and customize scheduling criteria

- Customize default reservation options:
  - Automatic station assignment
  - Test length
  - Availability notifications and more
- Set priorities according to:
  - Users
  - Test type
  - Station and more
- Conflict management during scheduling and run-time including:
  - Overlap rules
  - Interruptions
  - Failed to run actions
  - Priority conflicts and more

You can further optimize your test execution and planning with TestShell Resource Manager and TestShell Controller Modules!  
To learn more go to: [www.qualisystems.com](http://www.qualisystems.com)

## TestShell

TestShell is an end-to-end test automation solution compatible for testing virtually any hardware, device or embedded system. While providing code free **test authoring**, automatic **test execution**, advanced **test management** and comprehensive **test reporting and analysis**, TestShell helps equipment manufacturers and service providers to improve product quality, shorten time to market and significantly reduce capital and operational expenditures.